

# Functions at Adelaide Zoo





# Host with purpose, celebrate with impact.

Step into a world where nature meets extraordinary events. Adelaide Zoo, one of Australia's most historic and cherished venues, has been bringing people together since 1883.

More than just a breathtaking venue, Adelaide Zoo is part of Zoos SA, a not-for-profit conservation charity dedicated to saving species from extinction.

When you host your corporate function, gala, or private event here, you're not only giving your guests a truly unique experience—you're also supporting critical conservation efforts that protect wildlife and their habitats. Every event directly funds education, rescue programs, and global initiatives, ensuring that future generations can continue to connect with nature.

Let's create an event that inspires, captivates, and makes a lasting impact.

# Bamboo Forest

## Dine with pandas.

Create an event like no other with an exclusive breakfast, pre-dinner drinks, or dinner alongside Xing Qui and Yi-Lan the only giant pandas in the Southern Hemisphere. This rare and remarkable setting offers a once-in-a-lifetime opportunity to wine and dine in the presence of these incredible animals, leaving your guests with memories they'll talk about for years to come.

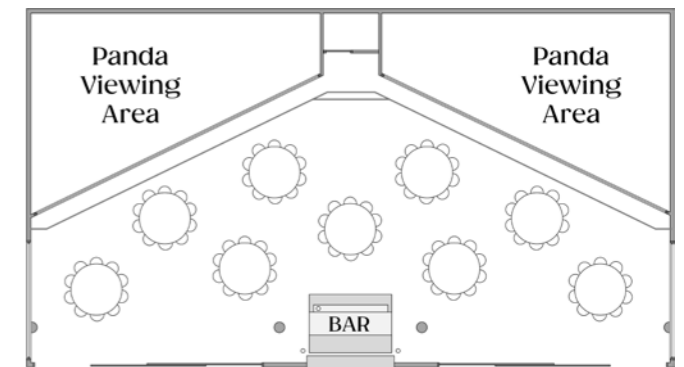
### Features

- All-weather suitability with fixed infrastructure for year-round events
- Permanent lighting for visibility and ambience, day or night
- Built-in bar for efficient beverage service
- Power access for an acoustic musician or a personal speaker system. (Not suitable for bands or DJs)
- Level ground throughout, suitable and accessible for all attendees

### Capacities

Undercover Venue:  
150 Cocktail | 90 Seated

Bamboo Forest Habitat (Undercover Included):  
500 Cocktail | 200 Seated



### Included Experience

Venue hire includes a welcome from one of our dedicated keeper team members, shared while Xing Qui and Yi-Lan enjoy their favourite treats or enrichment activities.

### Pricing

- 1 hour: \$2,000
- 2 hours: \$2,500
- 3 hours: \$3,000

### Availability

Monday to Sunday  
5:00pm to 10:00pm

# Giraffe Courtyard

## Truly unforgettable.

Imagine hosting your event just meters from our graceful giraffes and curious meerkats. The courtyard stretches along the habitat, offering your guests breathtaking views as they mingle, sip fine wine, and dine beneath the stars with these gentle giants as their backdrop. This open-air setting is ideal for creating magical moments for pre-dinner events, cocktail gatherings, or intimate dinners.

## Features

- Even, level terrain ensures easy movement and full accessibility for all guests
- Natural shade provided by tree canopies
- Ideal for unplugged sets, with power available for portable speaker use
- Exclusive use of the courtyard and adjacent meerkat habitat for a truly unique setting

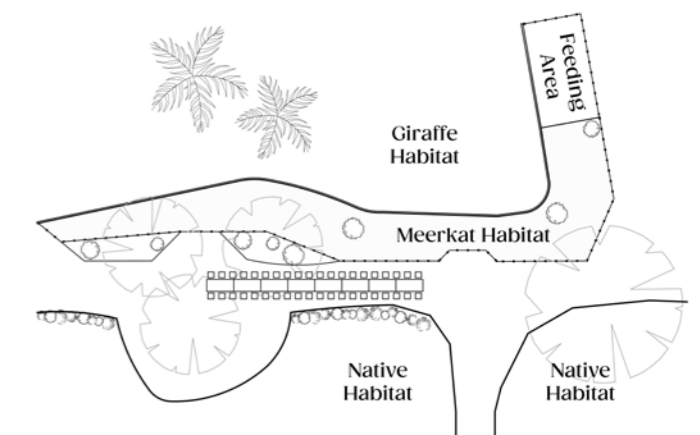


## Optional Experience

Add an extraordinary touch to your event with a giraffe hand-feed. Available for up to 25 guests, this exclusive add-on delivers a memorable moment your guests will never forget.

## Capacities

150 Cocktail | 50 Seated



## Pricing

- Venue Hire: \$850
- Giraffe Feed: \$750 (for up to 25 guests)

## Availability

Monday to Sunday  
5 pm - 11:00pm

# Immersion Longhouse

## A rainforest escape.

Surrounded by the lush, tranquil beauty of an Asian rainforest, the Immersion Longhouse offers a one-of-a-kind setting for your next event. Crafted from natural materials to blend seamlessly with its rainforest surrounds, this impressive venue features floor-to-ceiling glass panels that bring guests within a whisker of our majestic Sumatran Tigers for an experience like no other.

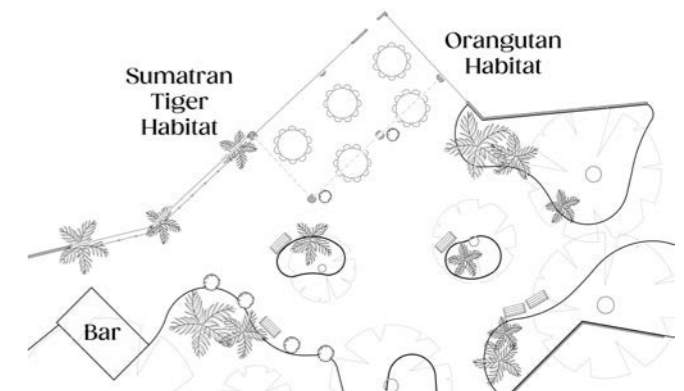
## Features

- Permanent infrastructure ensures the venue is suitable for events in all seasons
- Fixed lighting provides reliable illumination for evening and low-light events
- Purpose-built service hut for catering and bar operations, located beside the habitat
- Power is available for personal speaker systems, or an acoustic performer (Not suitable for bands or DJs)
- Positioned adjacent to the Orangutan habitat, offering a unique and engaging backdrop

## Capacities

Open-sided structure:  
60 Cocktail | 50 Seated

Structure and Immersion habitat gardens:  
140 Cocktail | 80 Seated



## Included Experience

Venue hire includes a welcome from one of our dedicated keepers. Watch as our keepers engage our tigers with some of their favourite foods or enrichment activities.

## Pricing

Venue Hire: \$1,750

## Availability

Monday to Thursday  
5:00pm - 11:00pm

# Sir Thomas Elder Rotunda

## Historic elegance.

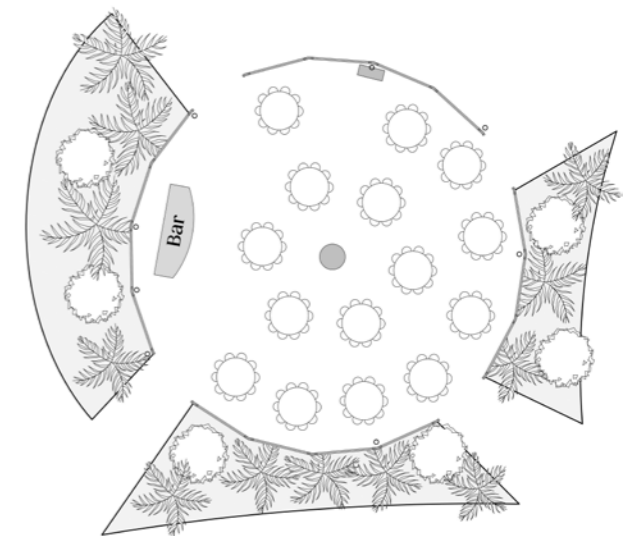
Set within the lush grounds of Adelaide Zoo, the Sir Thomas Elder Rotunda is one of the city's most iconic and unique event spaces. Offering 360-degree views of the picturesque gardens and the enchanting sounds of the zoo at night, this elegant outdoor venue provides an unforgettable setting for celebrations, corporate dinners, cocktail events, Christmas parties, and family gatherings.

## Features

- Level flooring throughout, providing smooth access and full accessibility for all guests
- Solid roofing structure, ensuring protection and comfort in all seasons
- Open sides allowing 360 degree views
- Retractable clear blinds for versatile use
- Hard-wired ceiling lighting
- Additional side pole downlights offering soft, atmospheric lighting options
- Audio system with wireless microphone
- 90-decibel sound limit, suitable for DJs and most live entertainment. (Excluding bands)
- Convenient access to amenities, including nearby restrooms and parents' room

## Capacities

250 Cocktail  
150 Seated | 130 Seated with dance floor



## Pricing

Venue Hire: \$850

## Availability

Monday to Sunday  
7:00am to Midnight

# Central Lawns

## Under the open sky.

Nestled within lush, green surroundings, the Central Lawns offer a spacious, adaptable, and picturesque setting for any occasion. Framed by natural beauty and the ambient sounds of nearby wildlife, this expansive outdoor venue is ideal for breakfast functions, cocktail gatherings, gala dinners, marquee events, outdoor cinemas, and wedding ceremonies or receptions.

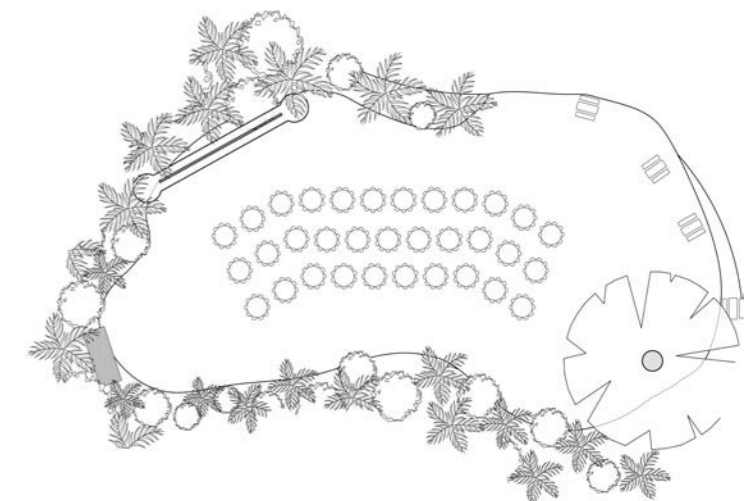
### Features

- Open-air venue with manicured gardens and a peaceful setting away from city noise
- Garden uplighting for evening events
- Flexible layout for various setups
- DJ and live entertainment-friendly (bands excluded)
- Easy access to restrooms and parents' room



### Capacities

1,000 Cocktail | 500 Seated



### Pricing

- During Zoo opening hours: \$2,750
- Outside Zoo opening hours: \$2,000

### Availability

Monday to Sunday  
7:00am to Midnight

# Natures Playground

## Fun-filled for all ages.

A vibrant, family-friendly venue designed to delight both children and adults. It's a popular choice for corporate family fun days, birthday parties, education programs, and community events.

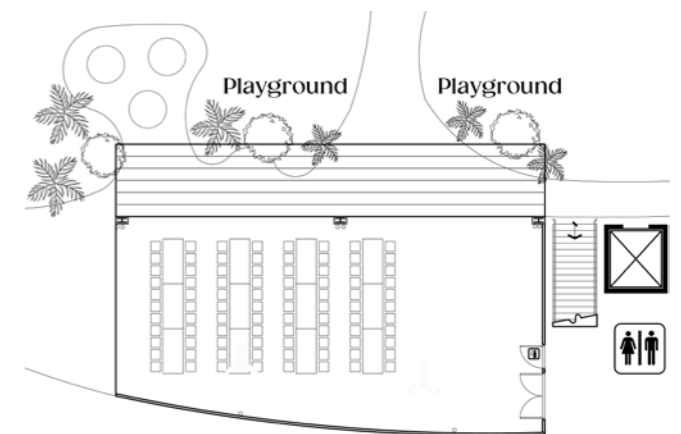
The space offers sheltered seating and direct, uninterrupted views of our expansive playground, ensuring everyone stays connected to the fun.

### Features

- Undercover structure with lighting and fans for all year-round versatility
- Overhead spotlighting above the playground for twilight and evening events
- Inbuilt speakers within the undercover structure for ambient music
- Parents' room conveniently located next to Nature's Playground
- Accessible bathrooms nearby
- Includes use of tables and chairs, arranged to suit your event needs

### Capacities

150 Cocktail (Undercover) | 90 Seated



### Pricing

- Venue Hire: \$750

### Availability

Monday to Sunday  
9.30am to 11:00pm

# Plane Tree Centre

## Versatile & impactful.

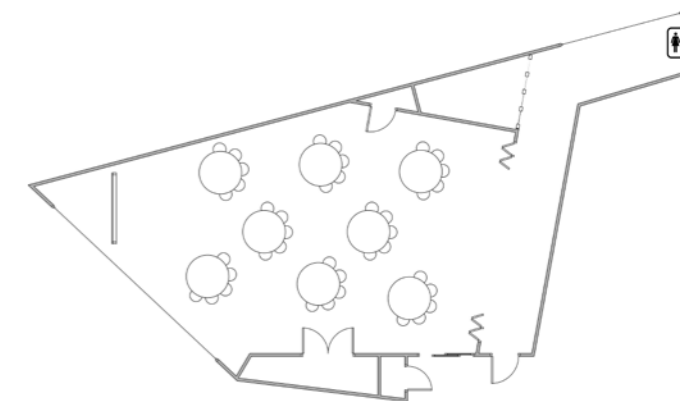
Conveniently located near the zoo entrance, this venue offers easy access via Plane Tree Drive and public transport. Architecturally designed with versatility in mind, the space is filled with natural light with a professional atmosphere. Its adaptable layout makes it suitable for everything from seminars to networking functions and receptions.

### Features

- Data projector and screen
- Wireless microphone and lectern
- Whiteboard and flip-chart
- Unisex restrooms conveniently located nearby
- Bi-fold doors for walkway separation
- Integrated heating and cooling throughout
- Floor-to-ceiling window with an electric privacy blind for adjustable lighting and views
- White linen tablecloths included for all events
- Full furniture setup and pack-down provided
- Kitchenette available for basic food and beverage preparation

### Capacities

Cocktail 150 | Seated 80  
Cabaret 60 | Boardroom 30



### Pricing

Venue Hire: \$500

### Availability

Monday to Sunday  
8:00am to Midnight

# Fig Tree Function Room

## In the heart of nature.

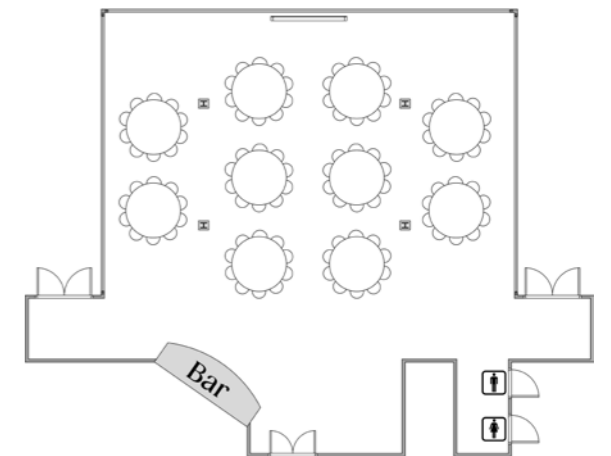
Nestled within the stunning grounds of Adelaide Zoo, the Fig Tree Function Room is a breathtaking indoor venue where elegance meets nature. Boasting abundant natural light and lush garden views, this versatile space is perfect for any occasion—from sophisticated dinners and lively cocktail parties to corporate conferences and unforgettable weddings and social gatherings.

### Features

- Central Adelaide Zoo location with floor-to-ceiling windows and stunning views
- Contemporary and modern interior styling
- Sound-dampening interior with privacy blinds, climate control, and adjustable lighting
- Private indoor bar
- Private indoor restrooms
- Built-in AV: projector, screen, microphone, and ceiling speakers
- White linen tablecloths and napery included
- All-inclusive staffing for seamless service
- Ducted heating and cooling throughout
- Full furniture setup and pack down included

### Capacities

Cocktail 150 | Cabaret 80 | Boardroom 40  
Seated 120 | Seated with dance floor 80



### Pricing

- Monday to Thursday: \$ 500
- Friday to Sunday: \$ 750

### Availability

Monday to Sunday  
6:00am to Midnight

Fig Tree Function Room is run exclusively by Quality Events Catering.

# Sanctuary Function Centre

## Modern with views.

The Sanctuary Function Centre at Adelaide Zoo is a state-of-the-art event space designed to accommodate a variety of functions. Located on the first floor of the zoo's entrance precinct, this award-winning venue offers a flexible, sophisticated and versatile venue in an unforgettable location ideal for exhibitions, conferences, gala dinners, and special celebrations.

## Features

- Floor-to-ceiling windows with scenic views
- Polished concrete floors (Durrell Gallery) and plush carpet (Attenborough Room)
- Projector, lectern, and integrated sound system
- Ducted heating and cooling throughout
- Lift access for full accessibility
- Stylish male, female, and accessible restrooms
- Private outdoor terrace and configurable room dividers for flexible layouts
- Tranquil indoor water feature
- Premium linen and napery included
- Full event staffing, setup, and pack-down service included for every event

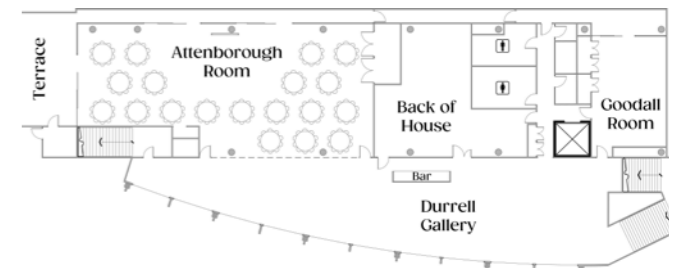
## Capacities

Attenborough Room: 280 Cocktail | 260 Banquet  
200 Theatre | 180 Cabaret

Durrell Gallery:  
250 Cocktail | 100 Banquet

Goodall Room:  
60 Cocktail | 50 Theatre | 40 Banquet | 28 Cabaret

This venue is run exclusively by Blanco Catering and Events.



## Pricing

- Goodall Room: \$600
- Durrell Gallery: \$800
- Attenborough Room: \$1,200  
(Includes all above spaces)

## Availability

Monday to Sunday  
6:00am to Midnight

# Family Fun Day



## Effortless Events.

Let the magic of Adelaide Zoo set the stage for an unforgettable day. Whether you're planning a corporate celebration or a social gathering, we will take care of every detail, with our Family Fun Day packages you can simply enjoy the moment.

### Inclusions

- All day zoo admission, giving your guests time to explore, discover, and connect with nature
- Exclusive venue hire from 9:30am to 3:00pm, with a choice between the Sir Thomas Elder Rotunda or Nature's Playground
- A captivating Wild Show experience in our amphitheatre, offering close-up encounters with these amazing animals
- A stress-free celebration, designed to inspire joy, wonder, and lasting memories

### Pricing

- 50 - 100 guests: \$36.50 pp
- 100 - 250 guests: \$34.50 pp

### Availability

Monday to Sunday  
9:30am to 3:00pm

### Capacities

Minimum: 50  
Maximum: 250



# Experience Twilight Zoo



## Unique & Purposeful.

Looking for a remarkable corporate event that blends entertainment with purpose? Host a Twilight Zoo event at Adelaide Zoo! A private, after-hours experience designed for your team, clients, or partners. By hosting your event with us, you're not only giving your guests an exclusive experience—they're also supporting vital conservation efforts locally and globally.

### Inclusions

- Private after-hours access to animal exhibits
- Exclusive keeper talks and feeding sessions
- Zoo Shop open exclusively for your guests
- Wheelchairs and accessibility support available
- Dedicated event staff, security and volunteers to ensure a seamless experience
- Choose from two onsite caterers\*
- Wheelchairs and Zooabus available\*
- Option to arrange external entertainment such as live music, face painting, and more to enhance your guest experience\*

\*Additional costs apply

### Choose from 3 venue options:

See next page for more details.

Twilight Zoo is available in three venue settings: Nature's Playground, Central Lawns, or choose the Whole Zoo for an unforgettable evening.

### Availability

Monday to Sunday  
5:30pm to 8:30pm

Only available during day light saving months



# Twilight Zoo Venue Options



## Natures Playground

Nature's Playground Twilight Zoo is a sheltered venue that offers access to the zoo's playground. It features two versatile lawn areas, ideal for gatherings, and is conveniently located near the Wisteria Café, restrooms, and a parent room.

Guests also have access to several popular attractions within the zoo, including the Variety Children's Zoo, Reptile House, Komodo Dragon Habitat, Yellow-footed Rock Wallaby Habitat, and the Nature Theatre, which hosts daily Wild Shows.

### Capacities and Pricing

Up to 800 Guests | \$8,800

## Whole Zoo

Whole Zoo Twilight provides access to animal habitats throughout the entire zoo, along with key areas including the Central Lawns, Sir Thomas Elder Rotunda, Nature's Playground, Fig Tree Café, and the retail shop.

Guests can also attend a range of Keeper Talks, including the Penguin Talk, Free Flight Bird Show, and the Pelican Feed.

### Capacities and Pricing

Up to 3,000 Guests | \$27,000

## Central Lawns

Central Lawns Twilight Zoo features the expansive greenery of the Central Lawns, the elegant Sir Thomas Elder Rotunda, and is located near the Fig Tree Café, which includes restrooms and a baby change area.

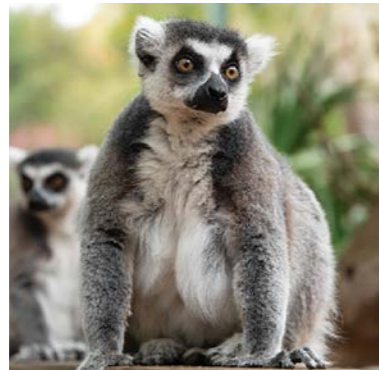
Nearby attractions include the Tasmanian Devil habitat, natives area, meerkats, giraffes, as well as the popular Pelican Talk and Free Flight Bird Show.

### Capacities and Pricing

Up to 1,500 Guests | \$15,000



# Zoo Bingo



## Availability

Monday to Sunday  
From 2:30pm to 5:00pm\*

\*Extended availability offered during daylight savings months.

## Pricing

- Up to 50 guests: \$2,500
- Additional guests: \$38 pp

## A Wild Adventure.

Host your event with Zoo Bingo, a fun team-based game where Adelaide Zoo becomes your game board. Collaborate with your teammates to solve clues, navigate exhibits, and discover hidden details throughout the grounds before relaxing at your choice of venue.

As our gift to you, each participant will receive an Adelaide Zoo lanyard, complete with their Zoo Bingo card and a branded pen to take home.

## A prize like no other

As a little extra motivation, the team with the highest score will win a close-up giraffe feed experience! A memorable opportunity to get up close and celebrate your victory with one of the zoo's most iconic animals.

## Inclusions

- 1.5 hours of Zoo Bingo fun
- 5 hours of venue hire of the Central Lawns or Sir Thomas Elder Rotunda post-game
- Custom Zoo Bingo cards created for your event
- Take-home keepsake for each participant, including a branded lanyard and pen
- Prize of up to 25 giraffe feed experiences

## Capacities

Minimum: 30 | Maximum: 300



# Live Shows & Keeper Talks



## Looking for more?

Discover captivating wildlife experiences at Adelaide Zoo, where dedicated keepers bring you face-to-face with some of the zoo's most engaging residents. Each encounter provides unique insights into the behaviors of these remarkable animals.

### Wild Show

Located within the Variety Children's Zoo, expert keepers present some of the zoo's friendliest animals in an engaging session.

### Penguin Talk

Join our dedicated keepers to discover the unique personalities of Adelaide Zoo's Little penguins as they enjoy their daily fish feed.



### Pelican Talk

Enhance your visit by stopping by the pelican colony during their feeding. It offers a unique opportunity to observe these charismatic birds and their charmingly quirky behaviors in action.

### Free Flight Bird Show

Heads up! Learn about a range of species like the Barking Owl and Blue and Gold Macaw as they soar over your head at the Free Flight Bird Show.

## Pricing

During opening hours: \$500  
Outside opening hours: \$650

## Capacities

Minimum: 1,000 | Maximum: 3,000

# Booking Information

## Pair your venue

If you're after something a little extra for your function, consider pairing one of our Botanic or Indoor venues with an Animal Habitat experience for a truly memorable occasion.

Whether it's welcoming your guests with pre-dinner drinks alongside our Sumatran Tigers at Immersion, or inviting them to explore the tranquil Bamboo Forest before heading to the main event on Central Lawns.

To learn more or discuss ideas for your function, speak with the Zoos SA Function Manager.



## Zoo Admissions

For functions held during Adelaide Zoo's opening hours, zoo admission is required unless stated otherwise. A discounted entry rate applies and will be included in your function quote.

## Catering Options

Catering is available from either Quality Events or Blanco Catering, depending on your chosen venue within the zoo.

- Fig Tree Function Room is exclusively serviced by Quality Events.
- Sanctuary Function Centre is exclusively serviced by Blanco Catering.
- All other venues are open to either caterer. Catering quotes will be provided upon request directly from your selected provider.

## Zoo Host

A Zoo Host may be required to oversee your function and ensure smooth operation on the day. Charges are based on the duration of your event and will be included in your quote.

## Security

For functions held outside regular zoo hours, security is mandatory. Costs are determined by the event duration and will be reflected in your quote.

## Zoo Map

Scan to view the Adelaide Zoo map.





# Let's get started.

Whether you're planning an intimate gathering or a grand celebration, our team is here to bring your vision to life. Let us help you create an unforgettable event in one of our stunning and unique venues at Adelaide Zoo.

Our event specialists are ready to guide you through our versatile spaces, tailored experiences, and exciting animal encounters, ensuring every detail is just right.

To find out more about the full selection of venues and experiences contact our friendly staff in the Venue and Functions team at:

**(08) 8230 1365 or at  
[adelaidezoo.com.au/venues](https://adelaidezoo.com.au/venues)**

