



Maa-aaa-ah!

Colouring book



ADELAIDE
ZOO



adelaidezoo.com.au



Is your kid a party animal?

Celebrate your little monkey's next birthday at Adelaide Zoo and meet our feathery, scaly and furry residents. With different packages available and all day entry to the zoo on the day, it's sure to be a wild day!

Book now!
at adelaidezoo.com.au

ADELAIDE
ZOO



adelaidezoo.com.au



Variety
**Children's
Zoo**

Colour in and learn

Our new Variety Children's Zoo is not only the first stop on your Adelaide Zoo adventure, it's also all about the welfare of our animals.

Everywhere you look something wild is happening in our new Variety Children's Zoo. Here, children can learn what it takes to develop trusting relationships with our animal friends, and how they can use these techniques to enrich the lives of their pets at home.

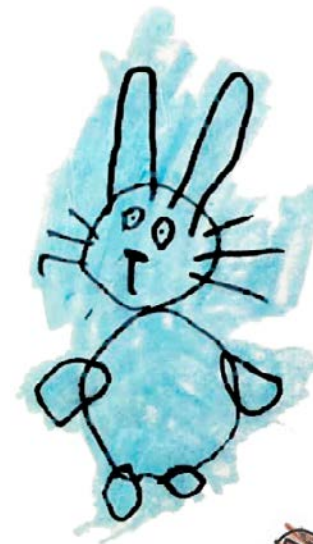
At Zoos SA, we continually watch out for ways to improve the welfare of our animals by using a specially-designed welfare audit tool, based on the Five Domains model of animal welfare. This scientific model of welfare looks at four types of physical welfare (nutrition, environment, health and behaviour) and how they work together to make sure an animal is happy, or has a positive mental state.

Your pets at home have the same needs as our animals here at the zoo, so we've adapted our welfare tool so you can easily assess the welfare of your furry, feathered or scaled friends at home.

Each colouring page in this booklet explains all about a different area of animal welfare and by colouring in your child can learn more about how we care for animals and how they can too.

Want to learn more?

Visit zoossa.com.au/animal-welfare to find out more and take the survey!



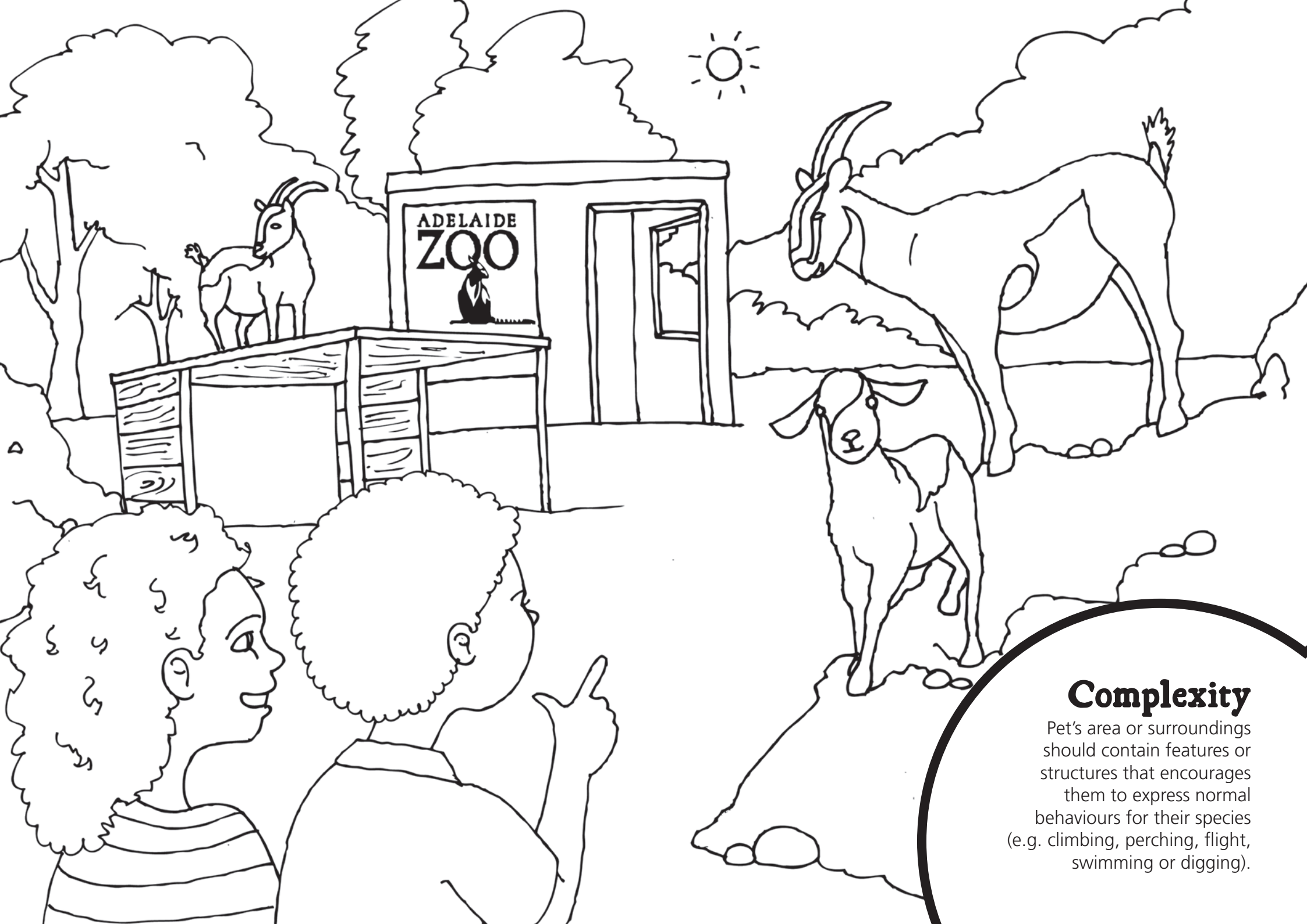
Bridie
Age 4



Claudia
Age 7

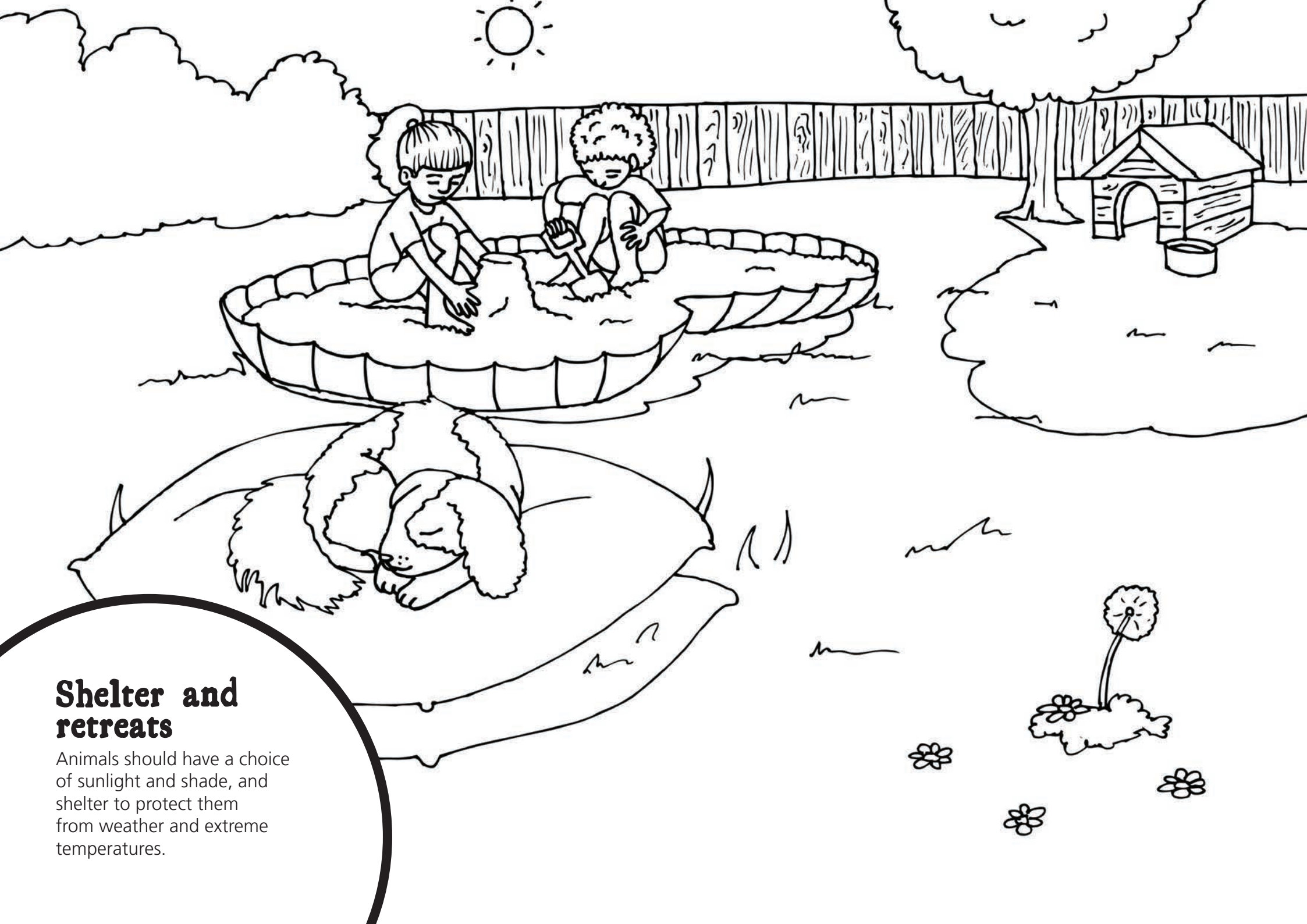


The Adelaide Zoo school holiday program is proudly supported by SA Water!



Complexity

Pet's area or surroundings should contain features or structures that encourages them to express normal behaviours for their species (e.g. climbing, perching, flight, swimming or digging).

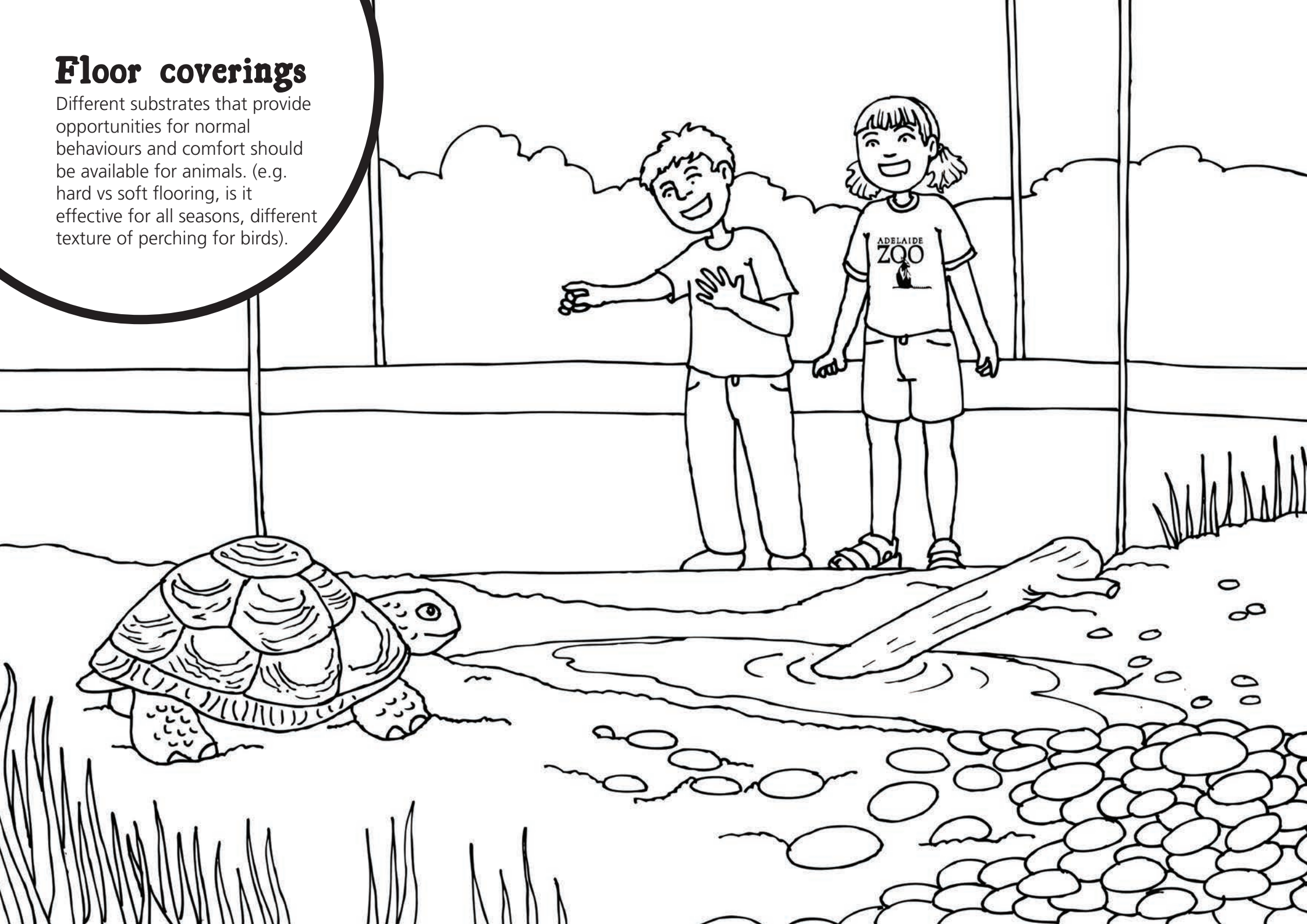


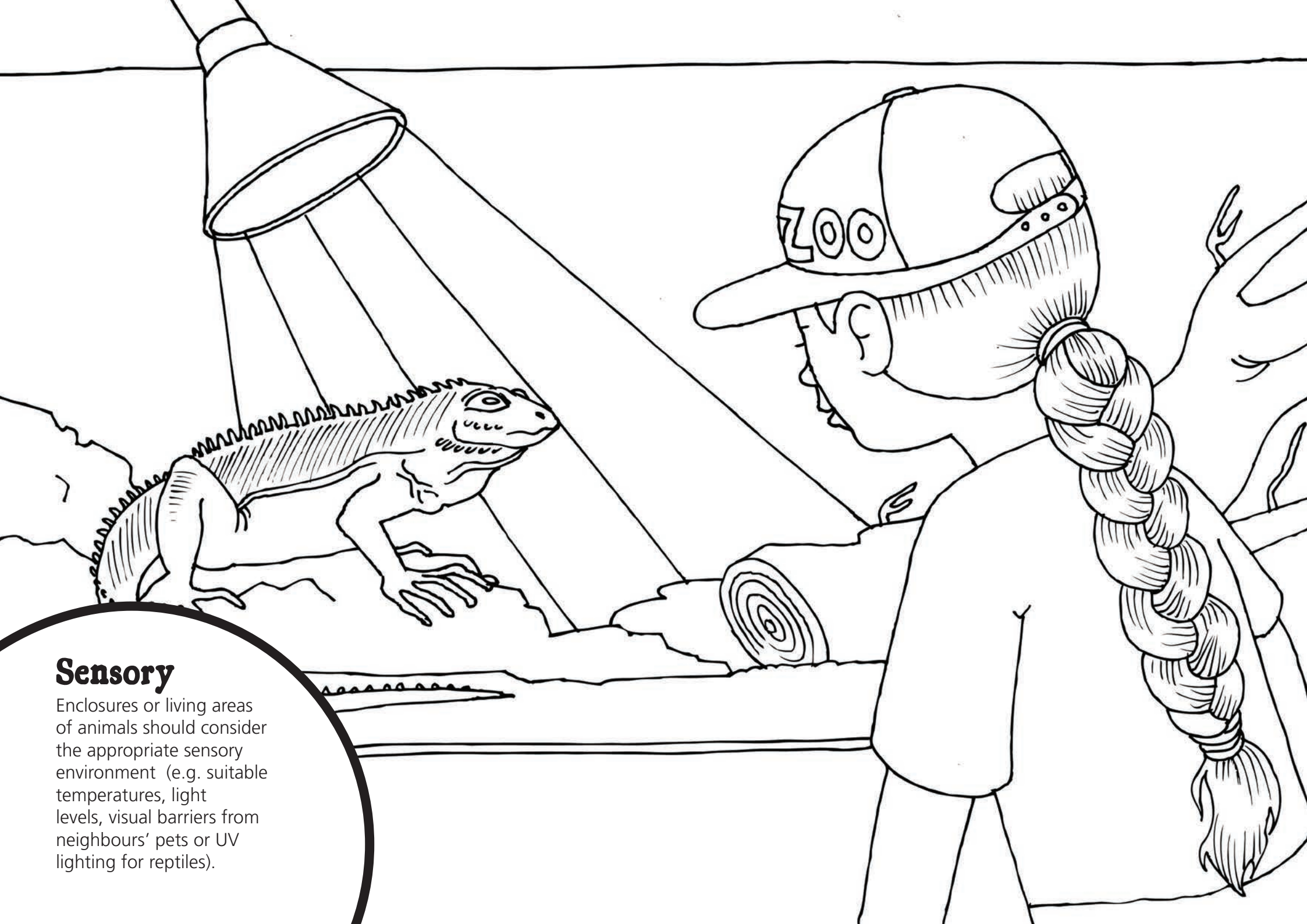
Shelter and retreats

Animals should have a choice of sunlight and shade, and shelter to protect them from weather and extreme temperatures.

Floor coverings

Different substrates that provide opportunities for normal behaviours and comfort should be available for animals. (e.g. hard vs soft flooring, is it effective for all seasons, different texture of perching for birds).



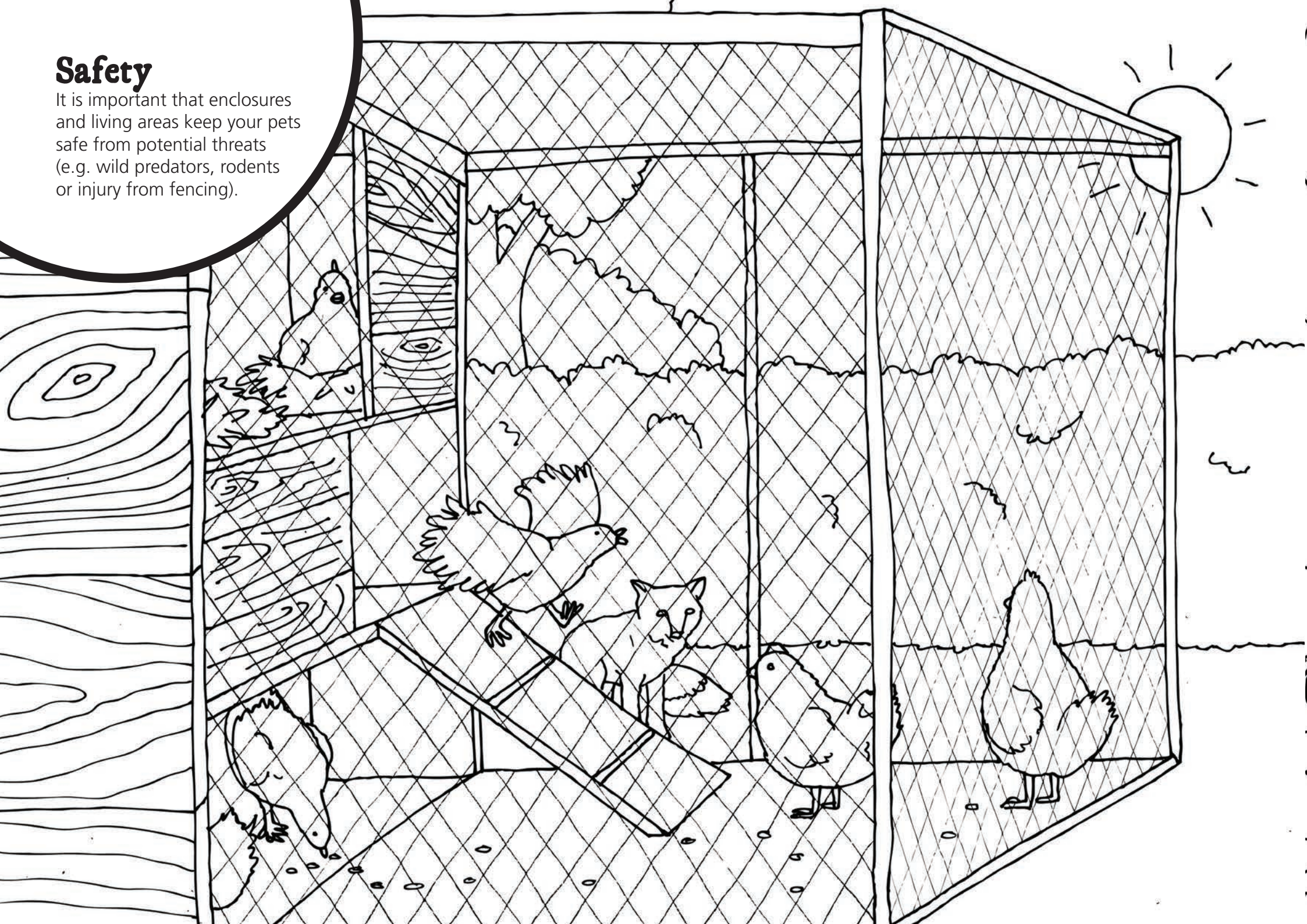


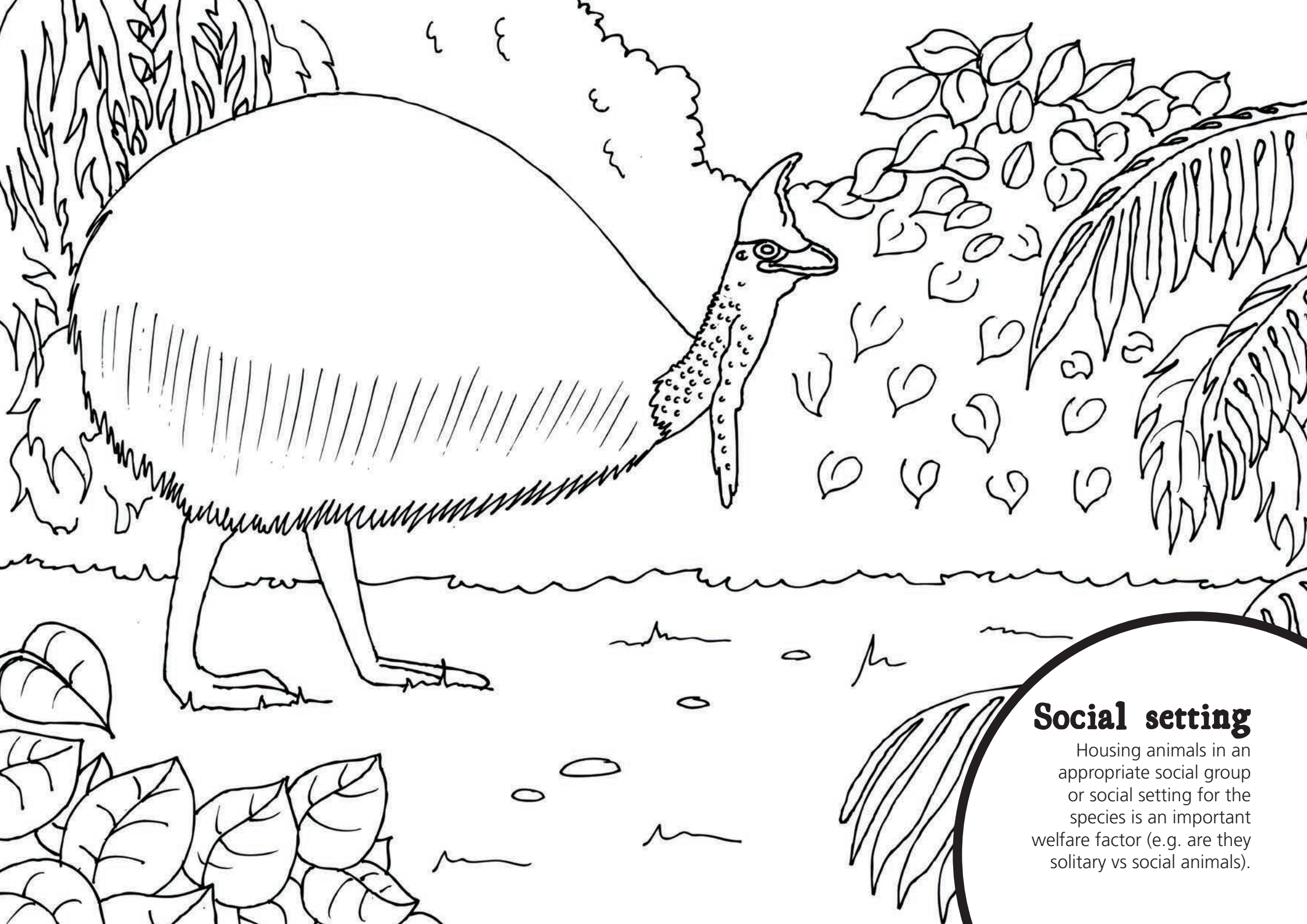
Sensory

Enclosures or living areas of animals should consider the appropriate sensory environment (e.g. suitable temperatures, light levels, visual barriers from neighbours' pets or UV lighting for reptiles).

Safety

It is important that enclosures and living areas keep your pets safe from potential threats (e.g. wild predators, rodents or injury from fencing).





Social setting

Housing animals in an appropriate social group or social setting for the species is an important welfare factor (e.g. are they solitary vs social animals).



Behaviour

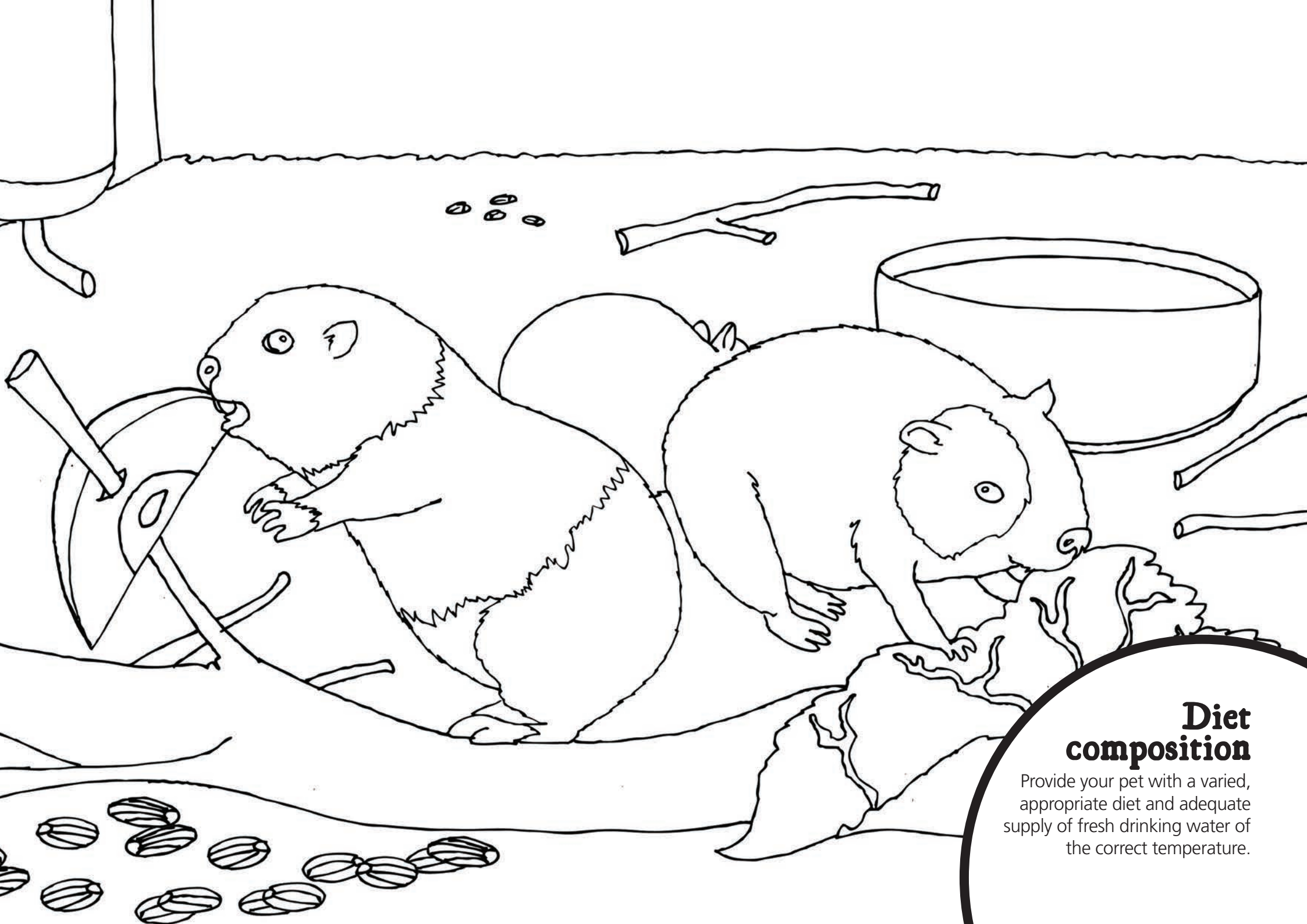
Animals need to be able to express all the normal behaviours you would expect for the species (e.g. foraging, scratching, exploration or play).



MONARTO SAFARI PARK

Enrichment

Food puzzles and other forms of enrichment challenge animals and encourage them to use natural behaviours. You can provide enrichment such as toys and different smells, sounds and objects that support your pet's behavioural needs (e.g. play, exercise, chewing or exploring).



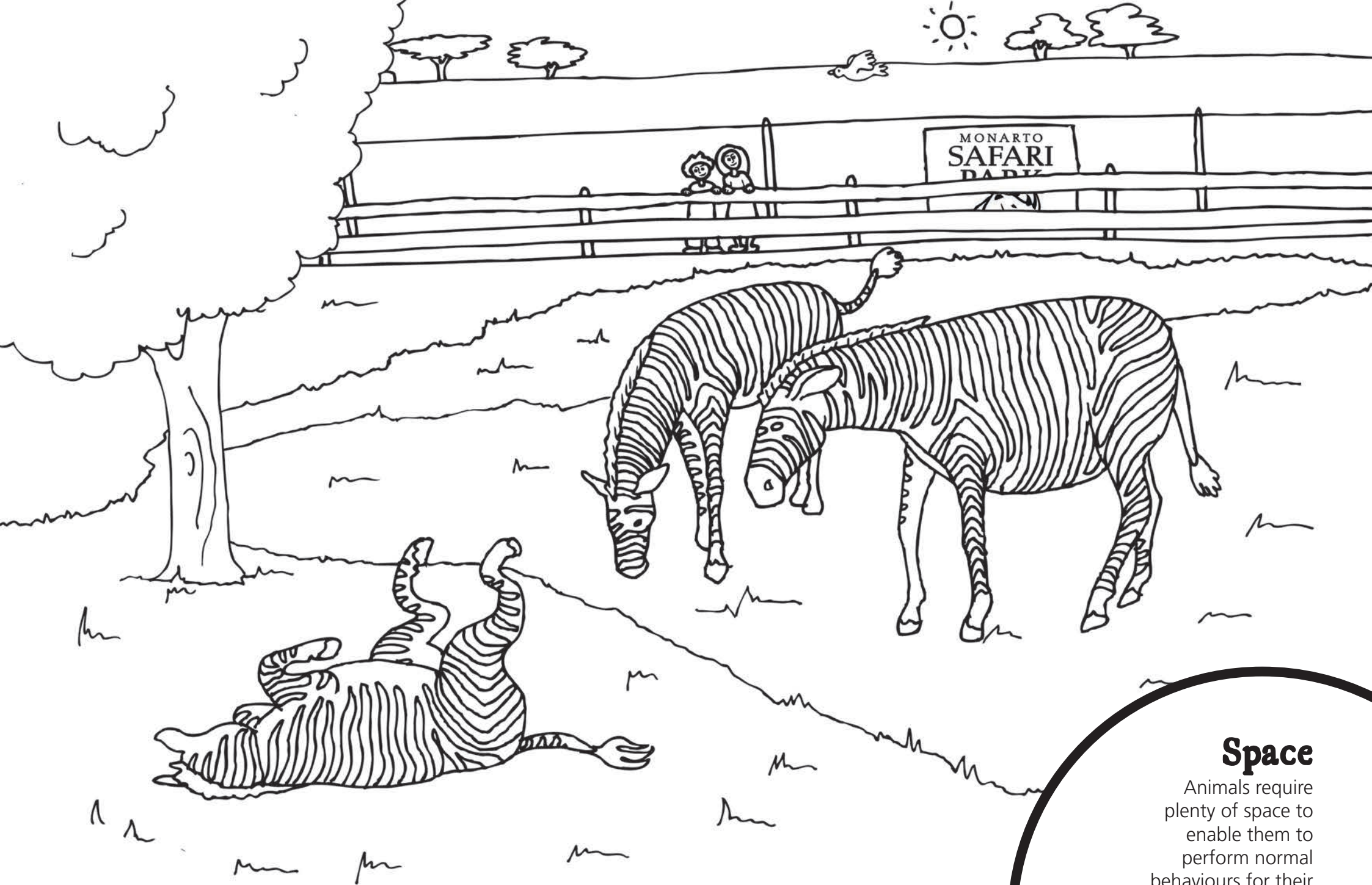
Diet composition

Provide your pet with a varied, appropriate diet and adequate supply of fresh drinking water of the correct temperature.



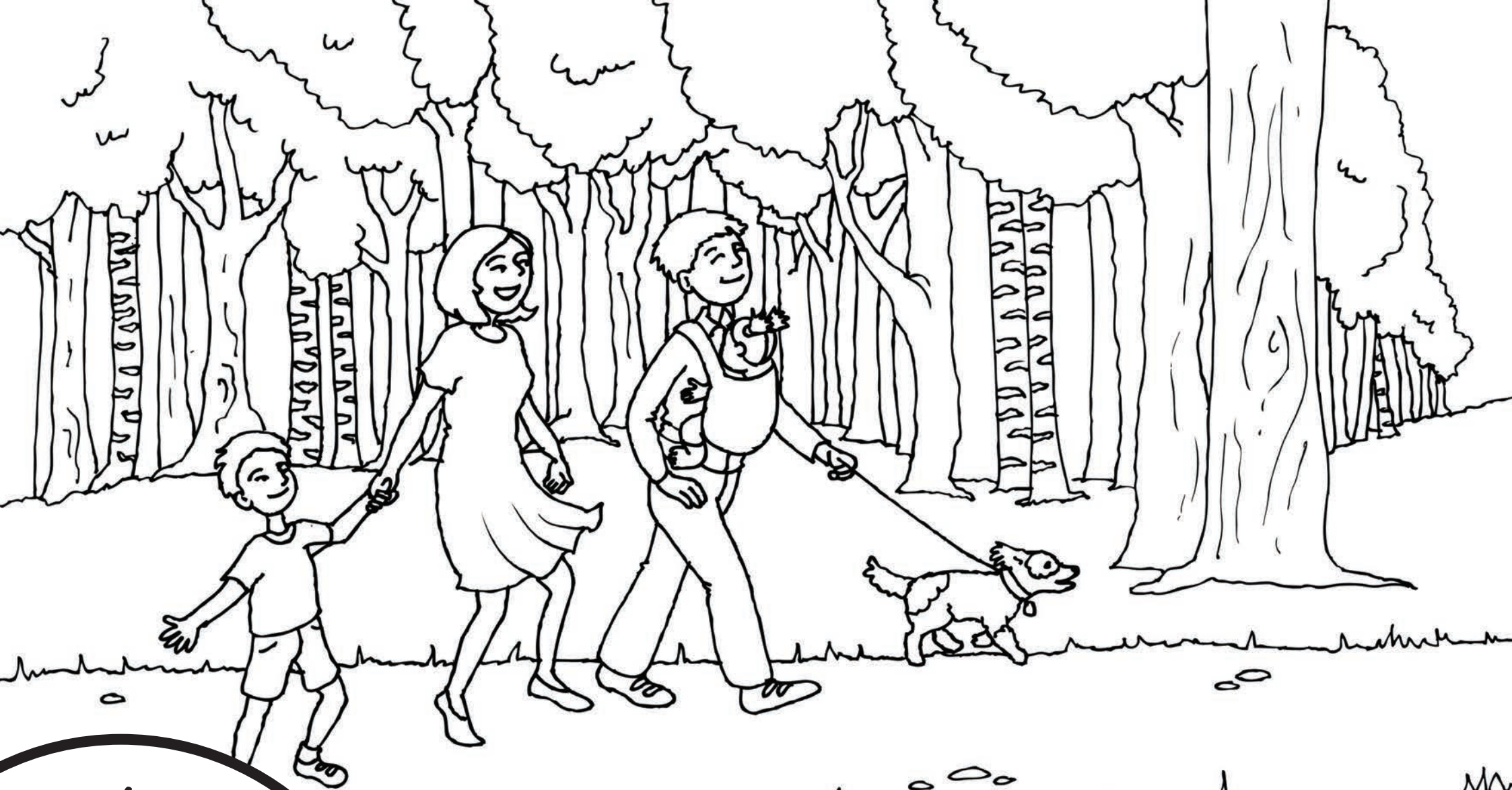
Food presentation

Present your pet with food in a way that encourages natural foraging behaviours.



Space

Animals require plenty of space to enable them to perform normal behaviours for their species.



Body condition

Is your pet in appropriate body condition for its age/ sex/season e.g. appropriate weight and coat/feathers/ skin condition?



Training

A training program for your pet can help facilitate proactive health care e.g. getting them used to go going to the vet, trained to be comfortable with you checking their face and body regularly. Remember to reward the behaviour you want to see more of in the future!



Health care

A proactive health care and parasite management program for your pet is vital for their wellbeing e.g. regular worming and vaccinations and supplements if required.

Get within a whisker

Adelaide Zoo's animal experiences give you an exciting chance to get up close to some of our amazing animals.

Our short and sweet Brief Animal Encounters run for approximately 15 minutes and are the perfect way to make your visit extra special at an affordable price. Depending on availability these can be booked on the day or online.

So head to adelaidezoo.com.au to book!

Experiences include

- Inspect an Insect
- Koala Encounter
- Lemur Encounter
- Lion Encounter
- Meerkat Encounter
- Penguin Encounter
- Squirrel Monkey Encounter
- Tree Kangaroo Encounter
- Yellow-footed Rock-wallaby Encounter

For a more in depth
experience check out
our Behind the Scenes
Animal Experiences at
adelaidezoo.com.au.

Proudly supported
by AGL.



Get involved

By visiting Adelaide Zoo and Monarto Safari Park you are supporting conservation and are having a positive influence on the environment.

There are many other ways you can help:

- Adopt your favourite animal
- Become a member (free entry to most zoos in Australia)
- Make a donation to one of our conservation programs
- Become a Zoos SA volunteer

Zoos SA is a not for profit conservation charity. We run Adelaide Zoo and Monarto Safari Park.

We do this by:

- Providing conservation education
- Undertaking breeding programs
- Supporting field and wild habitat conservation programs
- Conducting vital research

Visit zoossa.com.au to find out more and to get involved!

You can make a difference!

As a conservation charity, we rely on our supporters to help us continue our valuable breeding and conservation programs. When you visit Adelaide Zoo and Monarto Safari Park, become a member, adopt an animal or donate to Zoos SA, you're helping to care for the wonderful animals in our zoos and support our conservation projects in the wild.

Bgeerrrrrk!

Adopt us today!

Adopt our cheeky Goats, charismatic Chickens or cheery Quokkas and support animals in our zoos and in the wild!

Join our wild family

Join today and get unlimited visits to our amazing new play space. There's never been a better time to become a Zoos SA member!



ADELAIDE
ZOO



adelaidezoo.com.au

ADELAIDE
ZOO



adelaidezoo.com.au